

UNIVERSITI
MALAYSIA
PERLIS

SCHOOL OF ELECTRICAL SYSTEMS ENGINEERING



<https://electrical.unimap.edu.my>



<https://www.facebook.com/ppkse.unimap/>



+604 988 5601



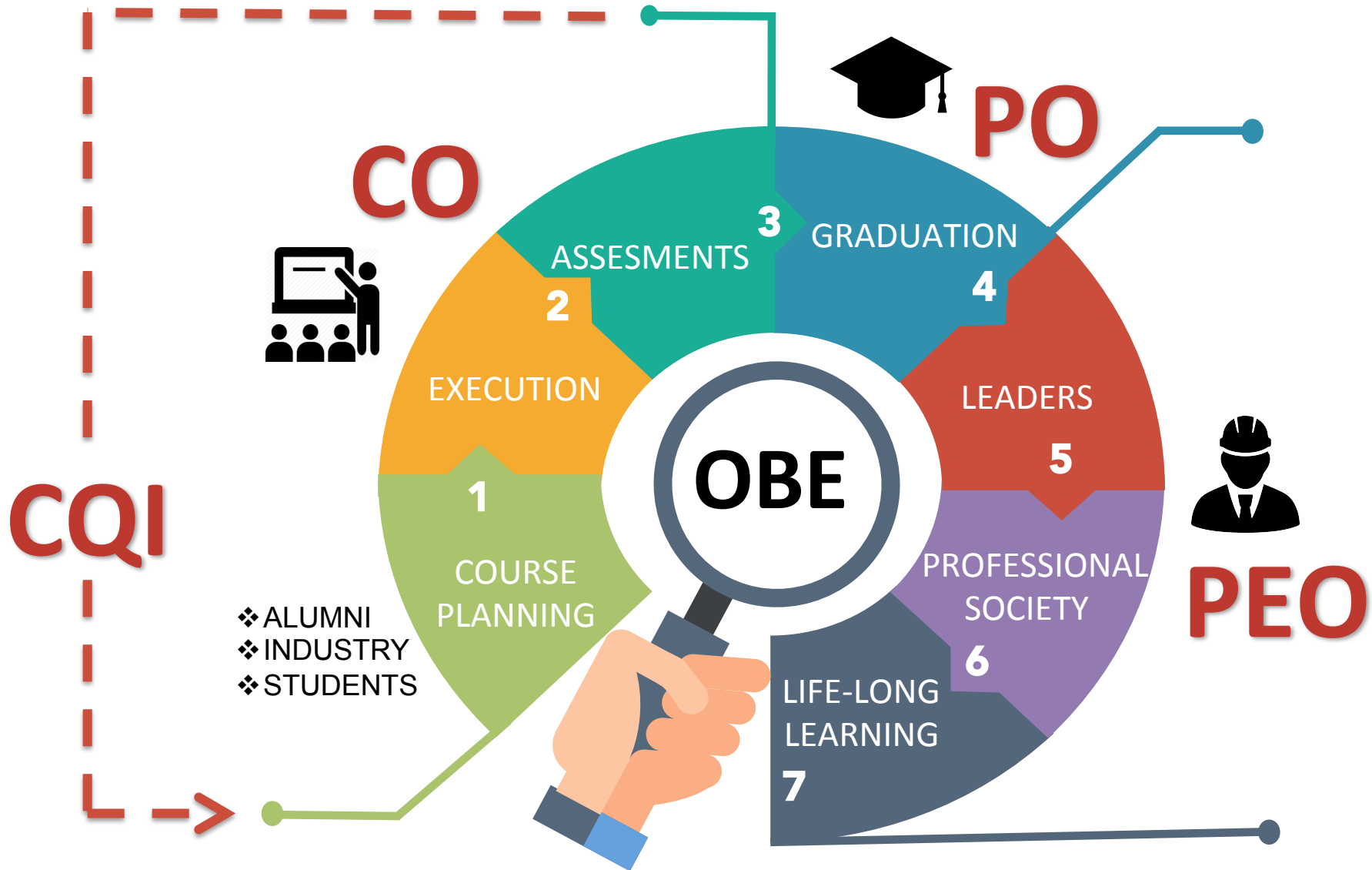
School of Electrical Systems Engineering,
Pauh Putra Campus, 02600 Arau, Perlis,
MALAYSIA.

OUTCOME BASED EDUCATION

Clearly focusing and organizing **education system** around what is essential for all **students** to be **able to do** successfully at the end of their learning experience



OBE IMPLEMENTATION



OBE ROLEPLAY

UP
U – Understand OBE
P – Productively Learn



DPQ
D – Deliver Knowledge
P – Performance Analysis
Q – Quality Improvement

IF
I – Improve Syllabus
F – Feedback on Programmes

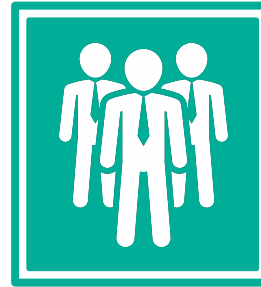
EDT
E – Equipment Safety
D – Data/Filling Management
T – Technical Support

PEO AND PO

Program Educational Objectives (PEOs)



LEADERS



PROFESSIONAL SOCIETY

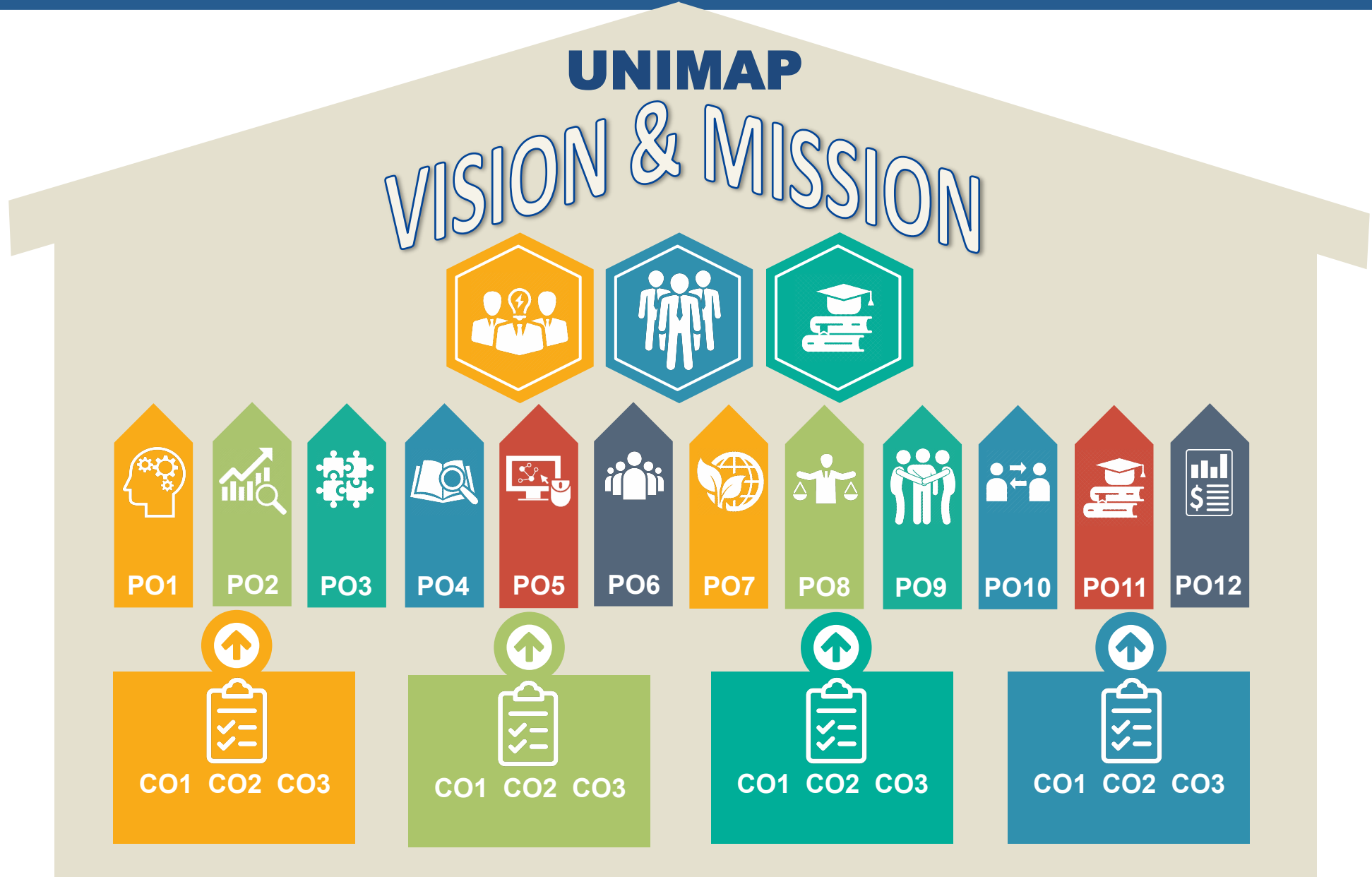


LIFE-LONG LEARNING

Program Outcomes (POs)



KEY CONSTITUENT OF OBE



OBE PROCESS

